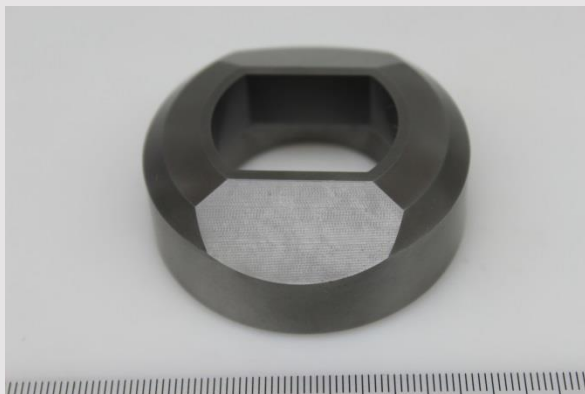
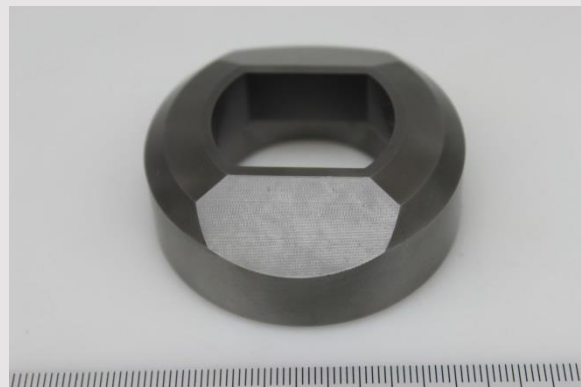


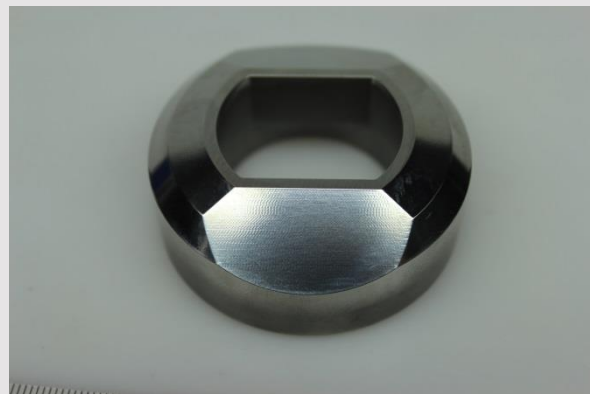
NEW!

Processing of Trimming Dies

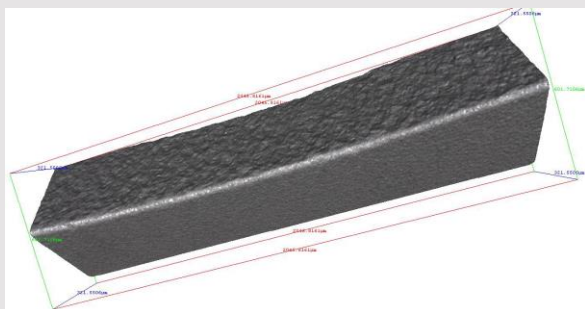
Task:	Edge honing
Process	
Machine:	SF 3
Media:	KXMA 16
Processing time:	10 min.
Speed	
Container:	65 1/min
Holder:	8 1/min
Angle B:	25°



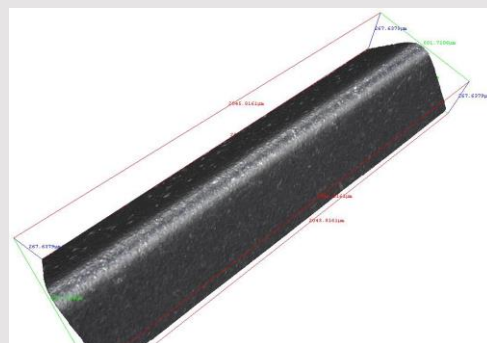
Before processing



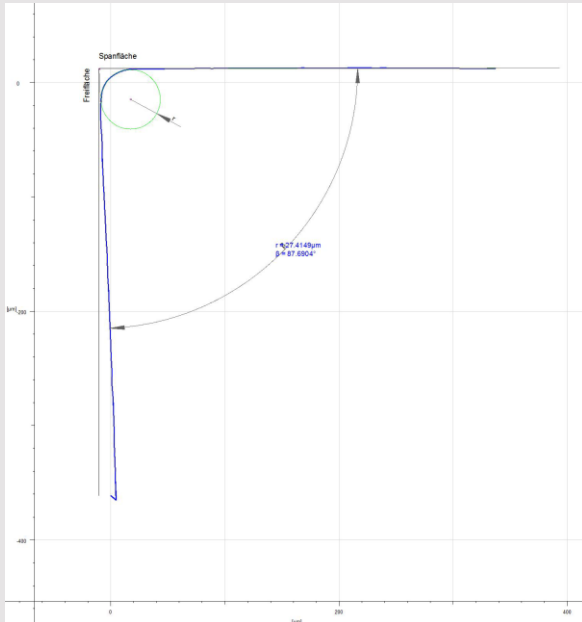
After processing



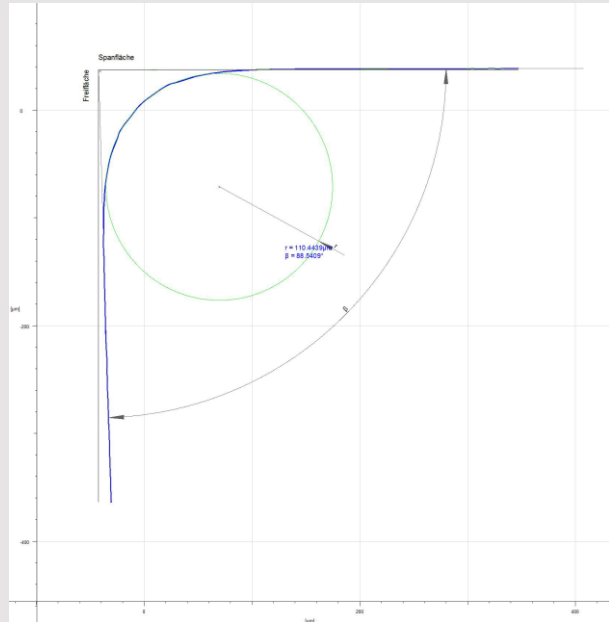
Before processing



After processing



Before processing



After processing



Special holders to cover the inside of the dies

Existing process: Brushing

Problem here is to have everywhere the same edge honing.

Result: very good, constant edge honing of about 100 μm and a really smooth surface on cutting edge. Customer is very happy with the result and wants to buy a SF 2. Now he can increase the quality of this product a lot.